

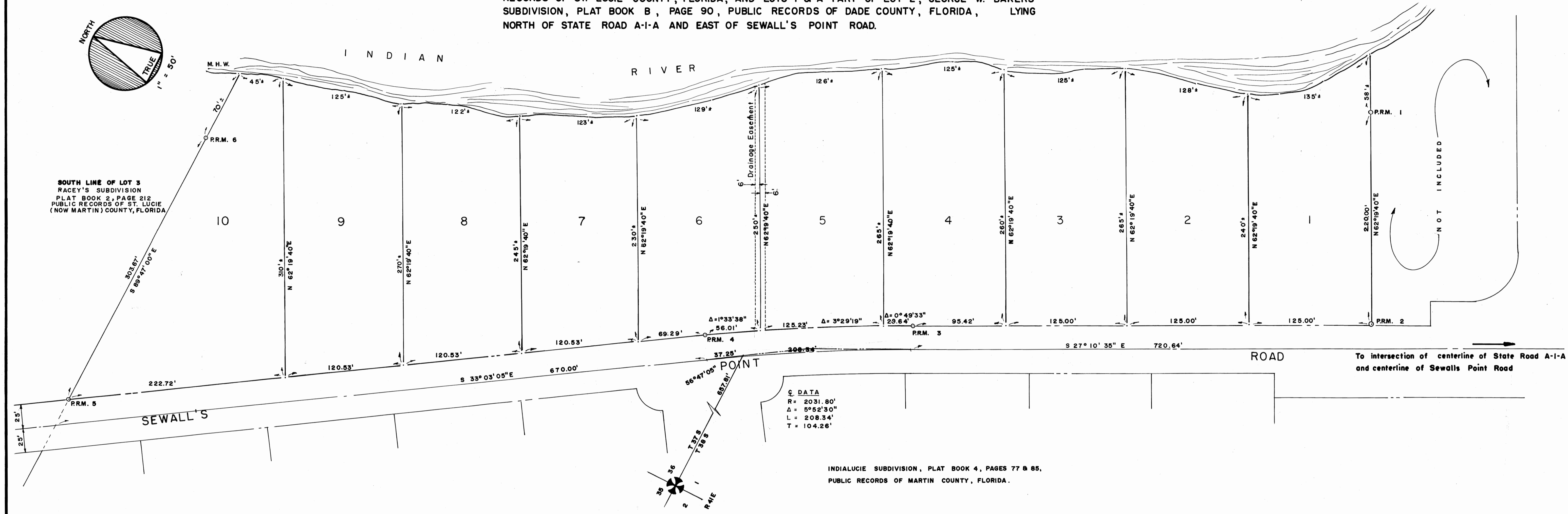
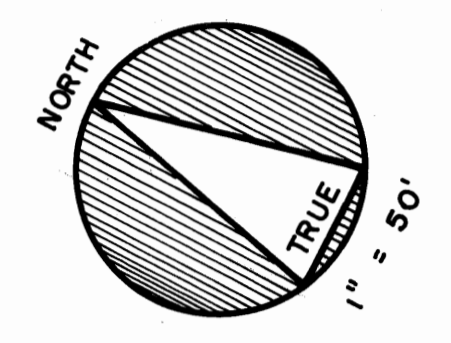
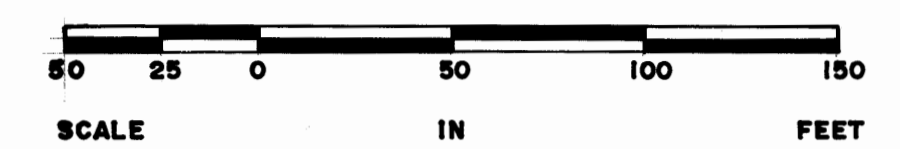
FILED FOR RECORD  
MARTIN COUNTY, FLA.  
1972 FEB -1 PM 2:18  
DOROTHY PIERCE  
CLERK OF CIRCUIT COURT  
BY \_\_\_\_\_ D.C.

I HEREBY CERTIFY THAT I HAVE  
EXAMINED THE ATTACHED PLAT AND FIND  
THAT IT COMPLIES IN FORM WITH CHAPTER  
177 FLORIDA STATUTES AND WAS FILED FOR  
RECORD IN PLAT BOOK 4, PAGE 11,  
THIS 1st DAY OF February, A.D. 1972  
IN THE OFFICE OF THE CLERK OF THE CIR-  
CUIT COURT AT STUART, MARTIN COUNTY,  
FLORIDA. DOROTHY PIERCE  
CLERK OF THE CIRCUIT COURT  
By: *Dorothy Pierce*  
FILE NO. 167527

# INDIALUCIE EAST

## SEWALL'S POINT, MARTIN COUNTY, FLORIDA

BEING THAT PART OF LOTS 4, 5, 6, RACEY'S SUBDIVISION, PLAT BOOK 2, PAGE 212, PUBLIC RECORDS OF ST. LUCIE COUNTY, FLORIDA, AND LOTS 1 & A PART OF LOT 2, GEORGE W. BAKERS SUBDIVISION, PLAT BOOK B, PAGE 90, PUBLIC RECORDS OF DADE COUNTY, FLORIDA, LYING NORTH OF STATE ROAD A-1-A AND EAST OF SEWALL'S POINT ROAD.



SOUTH LINE OF LOT 3  
RACEY'S SUBDIVISION  
PLAT BOOK 2, PAGE 212  
PUBLIC RECORDS OF ST. LUCIE  
(NOW MARTIN) COUNTY, FLORIDA

CURVE DATA  
R = 2031.80'  
Δ = 5°52'30"  
L = 208.34'  
T = 104.26'

INDIALUCIE SUBDIVISION, PLAT BOOK 4, PAGES 77 & 85,  
PUBLIC RECORDS OF MARTIN COUNTY, FLORIDA.

### CERTIFICATION

STATE OF FLORIDA  
COUNTY OF MARTIN

I HEREBY CERTIFY THAT THIS PLAT IS A TRUE REPRESENTATION OF A SURVEY, MADE UNDER MY DIRECTION AND THAT SAID SURVEY WAS ACCURATE TO THE BEST OF MY KNOWLEDGE AND BELIEF AND THAT PERMANENT REFERENCE MONUMENTS WERE PLACED AS REQUIRED BY LAW.

*James E. Brock*  
REGISTERED LAND SURVEYOR  
FLORIDA CERTIFICATE #688

SUBSCRIBED AND SWORN TO BEFORE ME THIS 12 DAY OF JANUARY A.D. 1972 AT STUART, MARTIN COUNTY, FLORIDA.

*Richard W. Bunell*  
NOTARY PUBLIC

MY COMMISSION EXPIRES JULY 1, 1975.

### DEDICATION

STATE OF FLORIDA  
COUNTY OF MARTIN

KNOW ALL MEN BY THESE PRESENTS THAT BESSEMER SECURITIES CORPORATION, A CORPORATION ORGANIZED AND EXISTING UNDER THE LAWS OF THE STATE OF DELAWARE, AUTHORIZED TO DO BUSINESS IN THE STATE OF FLORIDA, HAS CAUSED THIS PLAT TO BE MADE AND THE LAND TO BE SUBDIVIDED AS SHOWN HEREON AND DOES HEREBY AFFIRM THAT SAID CORPORATION IS THE OWNER IN FEE SIMPLE OF THE LAND SUBDIVIDED AND DESCRIBED UNDER THE ABOVE TITLE CAPTION AND DOES HEREBY DEDICATE TO THE PERPETUAL USE OF THE PUBLIC THE ROADS SHOWN HEREON, AND DOES PROVIDE FOR EASEMENTS FOR CONSTRUCTION AND MAINTENANCE OF PUBLIC UTILITIES. IN WITNESS WHEREOF BESSEMER SECURITIES CORPORATION HAS CAUSED THESE PRESENTS TO BE SIGNED BY ITS VICE-PRESIDENT WITH CONSENT OF ITS BOARD OF DIRECTORS AND ITS CORPORATE SEAL, AFFIXED AND ATTESTED BY ITS ASSISTANT SECRETARY THIS 11 DAY OF JANUARY, A.D. 1972

*Michael G. Phipps*  
VICE-PRESIDENT

*W.J. Field*  
ASSISTANT SECRETARY

### ACKNOWLEDGEMENT

STATE OF FLORIDA  
COUNTY OF PALM BEACH

BEFORE ME THIS DAY PERSONALLY APPEARED MICHAEL G. PHIPPS AND W.J. FIELD OF BESSEMER SECURITIES CORPORATION, WELL KNOWN TO ME TO BE THE PERSONS WHO EXECUTED THE DEDICATION SHOWN HEREON AND WHO ACKNOWLEDGED TO AND BEFORE ME THAT THEY EXECUTED THE SAME, FOR THE USES AND PURPOSES THEREIN STATED, ON BEHALF OF SAID CORPORATION. WITNESS MY HAND AND OFFICIAL SEAL AT PALM BEACH THIS 11 DAY OF JANUARY, A.D. 1972

*Walter C. Schmid*  
NOTARY PUBLIC

MY COMMISSION EXPIRES AUGUST 4, 1972

APPROVED  
TOWN OF SEWALL'S POINT  
DATE 1/12/72  
*Richard W. Bunell*  
MAYOR

STAFFORD & BROCK  
ENGINEERING-SURVEYING  
STUART, FLORIDA